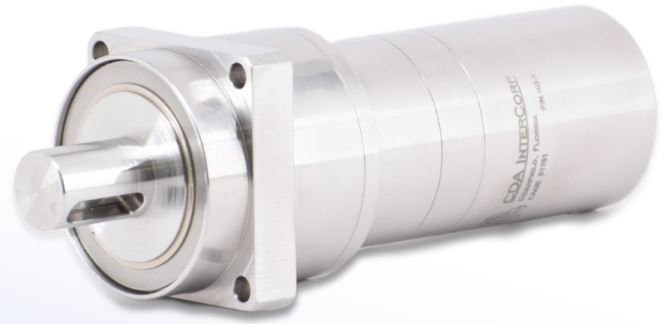


Stepper Motors

CDA's stepper motors provide incremental step output depending on the excitation logic. These steppers provide high running torque capacity per unit weight and size. Their high performance and excellent stepping accuracy make these components ideal in open loop positioning systems, incremental rate control systems, or limited angle rotary switches like those used in waveguides.



AEROSPACE

DEFENSE

DOWNHOLE

SPACE



Technical Summary

- ⦿ 2-, 3- and 4-phase unipolar and bipolar
- ⦿ Linear options with sub-micron stepping available
- ⦿ Output torques up to 3,000 lb-in (339 Nm)
- ⦿ Diameter from 0.5" (13 mm) to 3.0" (76 mm)
- ⦿ Typical 30° step angle (15°, 45°, 60°, and 90° available)
- ⦿ Precision planetary gearing for accurate stepping
- ⦿ Designed for extreme shock and vibration loads
- ⦿ Detent brakes for holding torque available
- ⦿ Operational temperature -269 °C to +260 °C
- ⦿ Radiation resistant with low power draw
- ⦿ Pre-outgassed for space flight upon request
- ⦿ Redundancy available in same envelop

Want more info about our Stepper Motors?

**Contact us at
(954) 698-6000
mail@CDA-Intercorp.com**

