

Brushless DC Motors



CDA's BLDC (or BPMM) motors are of the highest power density and reliability. Typically 3-phase commutated, they can be driven by conventional motor electronics and even sensorless drives.



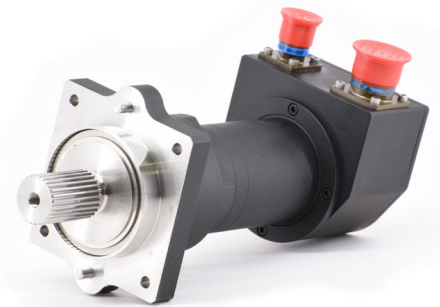
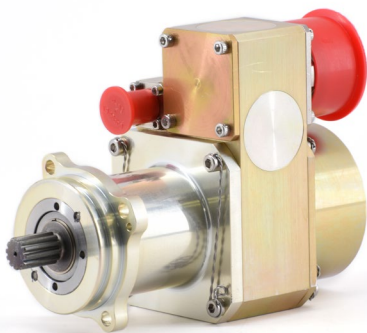
Paired with CDA's ultra strong planetary gearing, these motors can output extreme amounts of torque from small packages. CDA BLDC motors are used in many applications in space flight, on military and commercial aircraft, in downhole oil & gas applications, and other challenging market segments where size and power-density are at a premium.

AEROSPACE

DEFENSE

DOWNHOLE

SPACE



Technical Summary

- ⦿ 3-phase and 2-phase (+pole count choices)
- ⦿ Supply voltages up to 600V
- ⦿ Output torques up to 3,000 lb-in (339 Nm)
- ⦿ Diameters from 0.5" (13 mm) to 3.0" (76 mm)
- ⦿ Resolver, HED, encoder, or sensorless commutation
- ⦿ High speed & power throughput
- ⦿ Designed for extreme shock and vibration loads
- ⦿ All stainless construction for harsh environments
- ⦿ Operational temperature -269 °C to +260 °C
- ⦿ Custom housed & frameless designs available
- ⦿ Pre-outgassed for space flight upon request

**Want more info about our
Brushless DC Motors?**

**Contact us at
(954) 698-6000
mail@CDA-Intercorp.com**

